



The EL-WiFi-Alert is a stand-alone hardware add-on for EL-WiFi series data loggers. The sole purpose of the EL-WiFi-Alert is to provide an audio/visual notification when one or more of your EL-WiFi series data loggers (installed on the same wireless network) indicates an alarm state.

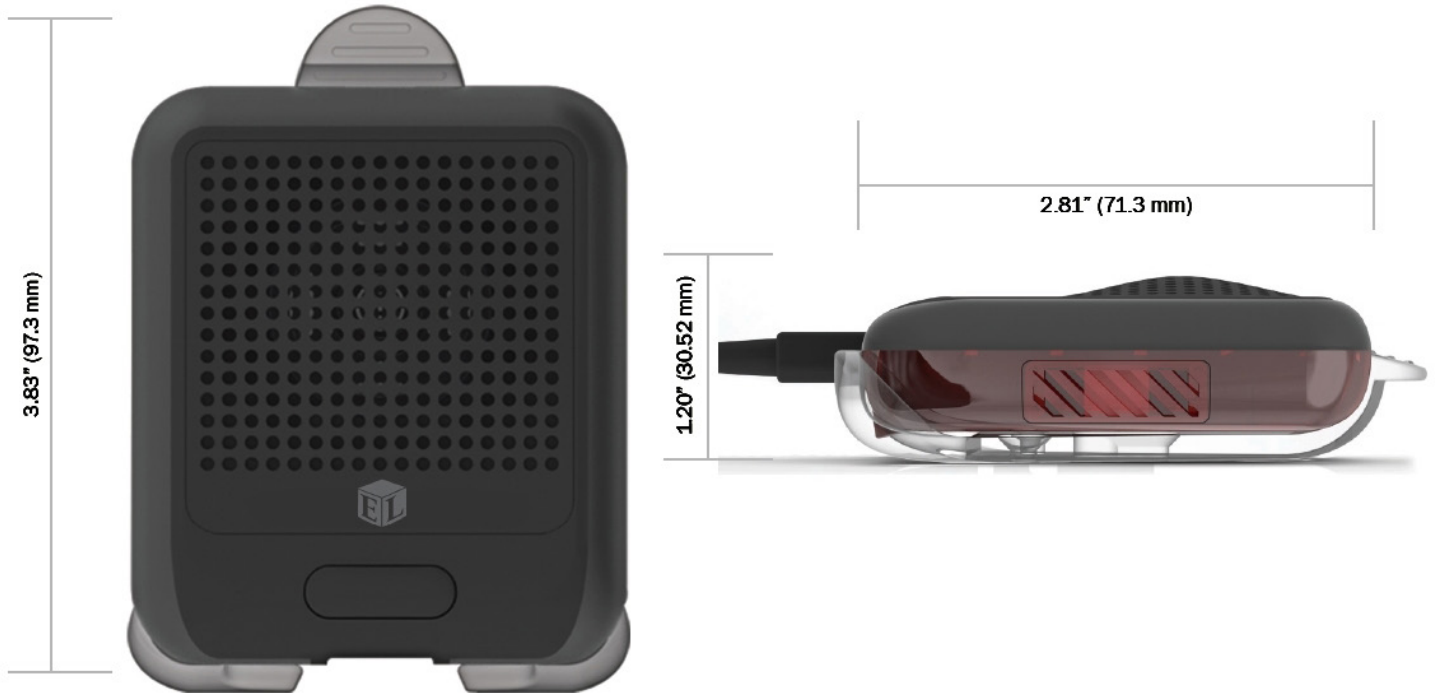
Using the downloadable EL-WiFi-WIN software, you can choose from nine unique alarm tones and 10 volume levels. In addition to the audible alarm, a flashing LED indicator, housed under the translucent rear cover, provides a striking visual cue. The audible and LED alarm indicators can be enabled/disabled independently, and can be muted after a user-defined period of time, from 30 seconds to one hour.

The EL-WiFi-Alert is a great complement to the built-in alarm indicators on all EL-WiFi series data loggers and in the PC based WiFi Sensor software. EL-WiFi-Alert units can be placed in secondary locations, out of sight of the EL-WiFi loggers themselves. When the EL-WiFi-Alert conveys an alarm, you can view the PC-based software to determine which unit(s) are in an alarm state. This added flexibility allows you to identify and respond to alarms that might otherwise go unnoticed.

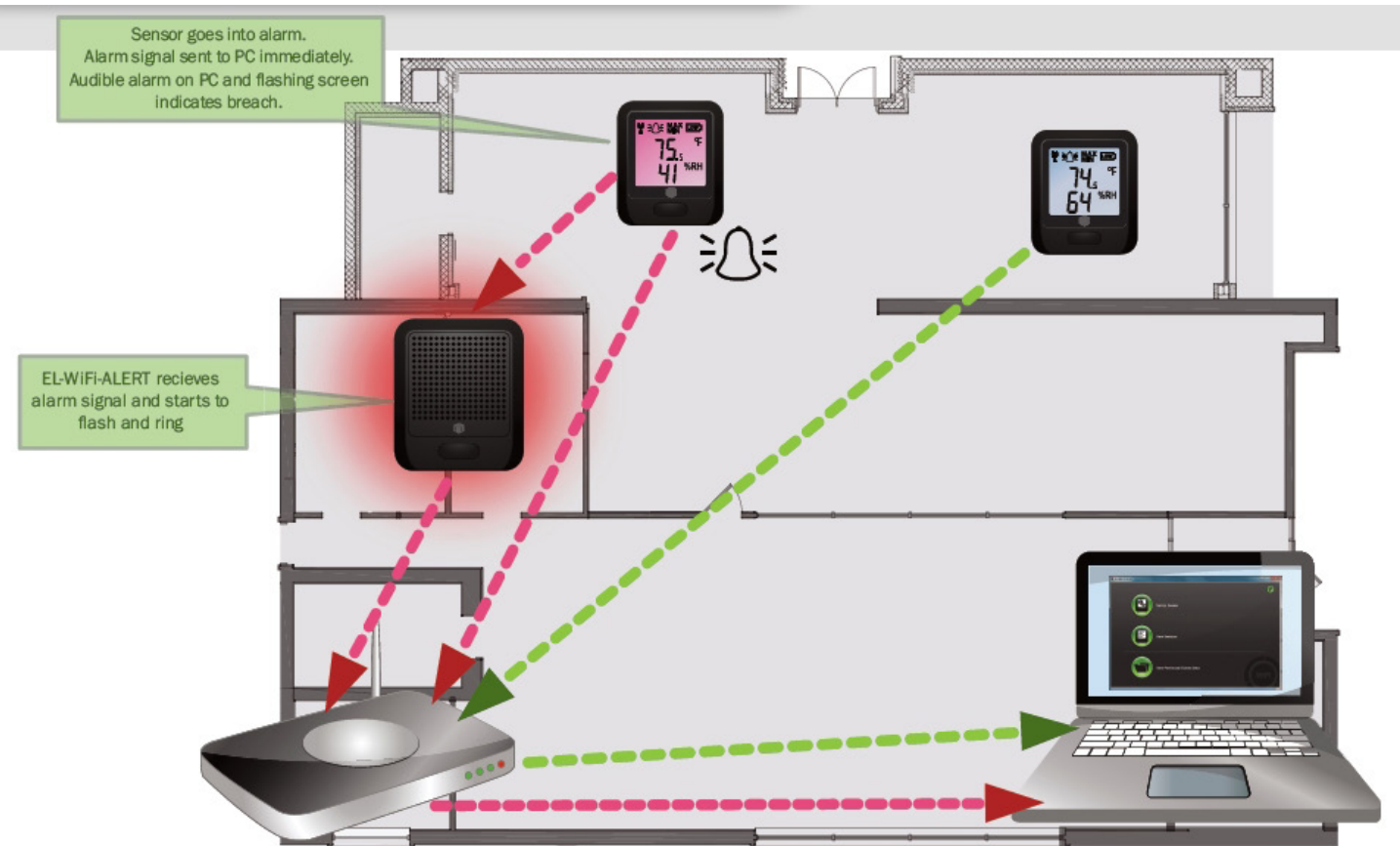
Features

- Detects alarm conditions from any number of EL-WiFi data loggers
- Emits an audible alarm at one of 10 user-defined volume levels
- Includes nine unique alarm sounds
- Flashing red LEDs provide a visual alarm indicator
- A built-in, rechargeable battery keeps the unit functioning in the event of a power failure
- Includes free, downloadable configuration software
- 802.11b compliant

EL-WiFi-Alert Dimensions



Typical EL-WiFi-Alert Deployment



Typical EL-WiFi-Alert Configuration Procedure

Configure your EL-WiFi-Alert using the downloadable EL-WiFi-WIN software.



EL-WiFi-Alert Specifications

Specification	Minimum	Typical	Maximum	Unit
Back-up battery life			2	Days
USB Supply Voltage	4.5	5	5.5	VDC
Sound output		100		dBA @ 1m
Operating Temperature Range	-20 (-4)		+60 (+140)	°C (°F)
Number of Loggers per PC			253	Loggers
Supported Security Standards	WEP 64 bit; WEP 128 bit; WPA-PSK; WPA2-PSK			

WARNING: Do not exceed operating temperatures.

EL-WiFi-Alert Ordering Information

Description	Order Number
EL-WiFi-Alert Includes unit, mounting bracket, USB cable (1 meter), AC adapter and software (downloadable).	EL-WiFi-Alert

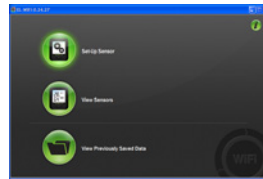
Included



EL-WiFi-Alert



**Mounting
Bracket**



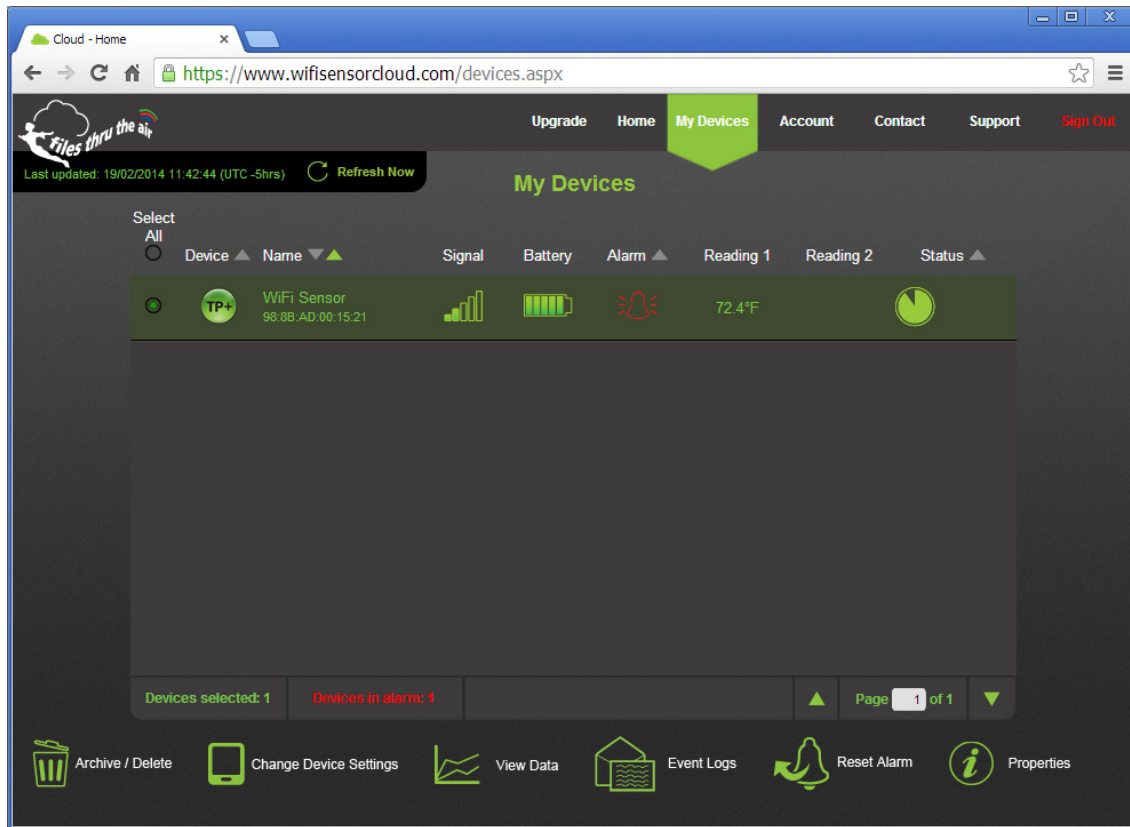
**Software
(Via Download)**



**USB Cable and AC Adapter
(1 meter)**

Cloud-based Device Management

When you setup any EL-WiFi product you have the option of managing the data logger locally from a PC running a Windows OS and located on the same subnet as the logger (as described above), or to perform management via a cloud server using *Files Thru The Air™* technology. Cloud server management with *Files Thru The Air™* offers the flexibility of managing and monitoring any number of devices from any location in the world with your smart phone, tablet, laptop, or desktop running any operating system and using only a web browser.



Files Thru The Air™ Cloud Management Features

Files Thru The Air™ technology puts you in control of your data. Local management is out, and remote management is in – from any location using any device that has a web browser:

- ✓ Accessible from any location, local or remote from the data logger's LAN
- ✓ Password-protected access using SSL sessions for security
- ✓ Supports all operating systems (all you need is a web browser)
- ✓ Supports all smart phones, tablets, laptops, and desktop computers
- ✓ Remote management, including all device settings:
 - Device name
 - Temperature scale
 - Sampling interval
 - Transmission period
 - Alarm Settings
- ✓ Instant email alerts to as many as 100 addresses:
 - When acquired data breaches definable limits
 - When there's an AC power outage
 - When a device's battery is low
 - When the device loses connection with the Cloud
 - When there's a device-specific problem
- ✓ Data storage in the cloud
- ✓ Cloud-based graphical and tabular data displays with date and time
- ✓ Optional services:
 - Audit trail export to provide a documentary record of changes
 - Multiple user access
 - Individual time zones per user
 - Recorded data printing and export
 - Unlimited data storage
 - Unlimited devices

EL-WiFi Data Logger Series

EL-Wifi Data Logger series products are a line of low cost, compact, battery-operated data loggers with with wireless connectivity and an LED display. Each product in the line offers a specific measurement function and range.

Temperature Data Loggers -20 to +60°C (-4 to +140°F)

EL-WiFi-T
[Learn More](#)



Temperature and Humidity Data Loggers -20 to +60°C (-4 to +140°F) and 0 to 100% RH

EL-WiFi-TH
[Learn More](#)



EL-WiFi-T+
(Higher Accuracy)
[Learn More](#)



EL-WiFi-TH+
(Higher Accuracy)
[Learn More](#)



Temperature Data Loggers with Probe -40 to +125°C (-40 to +257°F)

EL-WiFi-TP
[Learn More](#)



EL-WiFi-TP+
(Higher Accuracy)
[Learn More](#)



EL-WiFi-DTP+
(Higher Accuracy)
[Learn More](#)



Thermocouple Temperature Data Loggers -270 to +1300°C (-454 to +2372°F)

EL-WiFi-TC
[Learn More](#)



EL-WiFi-DTC
[Learn More](#)



Lascar Data Logger Product Lines

EL-USB Data Loggers



Lascar EasyLog model EL-USB series products are a line of low cost, compact, battery-operated data loggers with built-in memory and a USB interface for easy setup and data download. Each product in the line offers a specific measurement function (including temperature, voltage, process current, and more).

EL-GFX Data Loggers



The EL-GFX line of data loggers is the latest release from Lascar Electronics with similar functionality of the EL-USB series with an added graphic display for data.

EL-WiFi Data Loggers



Lascar's EL-Wifi Data Logger series products are low cost, compact, battery-operated data loggers with wireless connectivity to any PC over a WiFi router. Each product in the line features a large, easy-to-read display of current measurements, and is purchased for specific measurement functions.



241 Springside Drive
Akron, Ohio 44333
Phone: 330-668-1444
Fax: 330-666-5434

Data Acquisition Product Links

(click on text to jump to page)

[Data Acquisition](#) | [Data Logger](#)